

Logo of the geospatial information and surveying authority of Saxony. Includes the text 'STAATSBETRIEB GEODÄSIEINFORMATION UND VERMESSUNG SACHSEN' and 'ATKIS'.

Topographic map of Hoyerswerda at a scale of 1:50,000. Shows the city and surrounding areas with topographic details.

Blattübersicht (sheet overview) map showing the location of the main map within a grid of topographic sheets. Includes the text 'Blattübersicht der Topographischen Karte 1:50 000 (TK50) in der Bundesrepublik Deutschland (Ausschnitt)'.

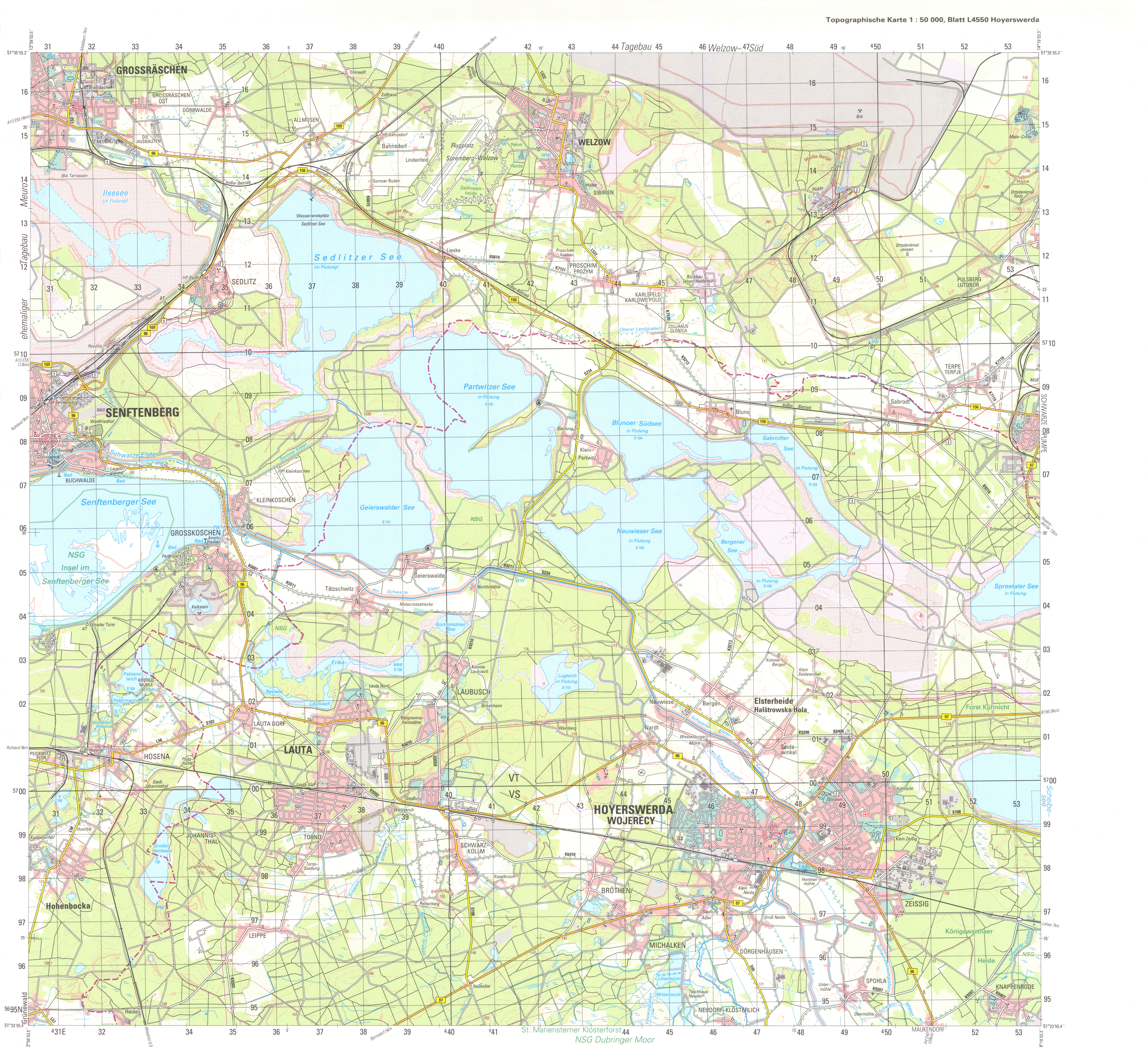
Verwaltungsgliederung (administrative division) map showing the administrative boundaries of the Land Brandenburg and the districts of the Freistaat Sachsen.

Relief map showing contour lines and terrain features. Includes a legend for contour lines and terrain elevation.

Herabgeber (publisher) information. Includes contact details for the State Geodesy and Surveying Agency of Saxony, including address, phone, and website.

Series information for the M745 topographic map. Includes the title 'Hoyerswerda', the series number 'M745', and the edition 'Ausgabe 8-DIGID L4550'. It also features a barcode and ISBN number.

Legend (Legende) for the topographic map. It lists various symbols and their meanings in German, Polish, and English. Categories include settlement types (AUE, Lohmen, REICK, Seida, Zingelie), infrastructure (Vorsorgung Entsorgung, Verkehr), vegetation (Vegetation), water features (Gewässer), relief (Relief), and boundaries (Grenzen).



Geographical coordinates and datum information. It provides the coordinates for the map's center and the datum used for the map's projection.

Information about the map's grid system. It describes the 100-meter grid and the 1000-meter reference system used for the map.

Information about the map's projection and datum. It specifies the UTM (Universal Transverse Mercator) projection and the datum used for the map's coordinates.

Scale information and projection details. It includes a graphic scale bar and information about the map's scale and projection.

Information about the map's datum and projection. It provides details about the datum used for the map's coordinates and the projection used for the map's grid.

Blattübersicht (sheet overview) map showing the location of the main map within a grid of topographic sheets. Includes the text 'Blattübersicht - Adjoining sheets - Skorowidz zasięgu map'.

Series M745 Ausgabe 8-DIGID L4550