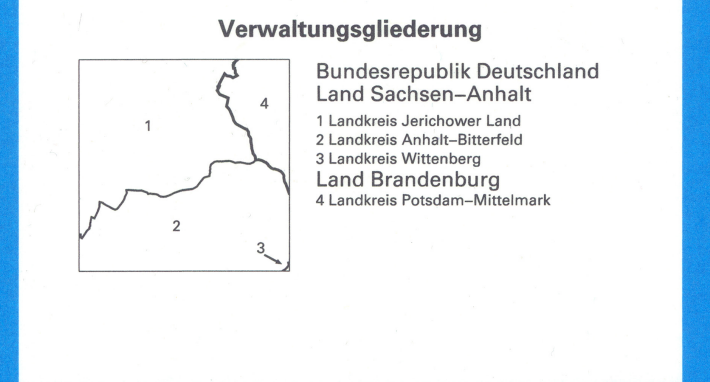


Grid reference table for the 1:50,000 map, showing coordinates for various grid squares across the region.

Diese Karte ist aus dem Digitalen Landschaftsmodell 1 : 50 000 des Amtlichen Topographisch-Kartographischen Informationssystems (ATKIS®) abgeleitet.

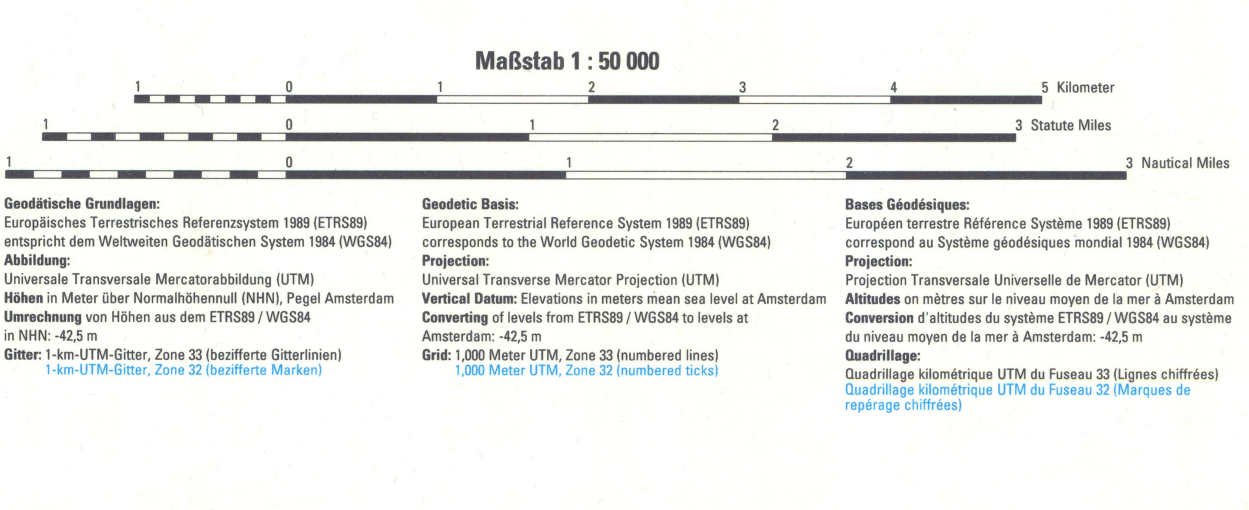
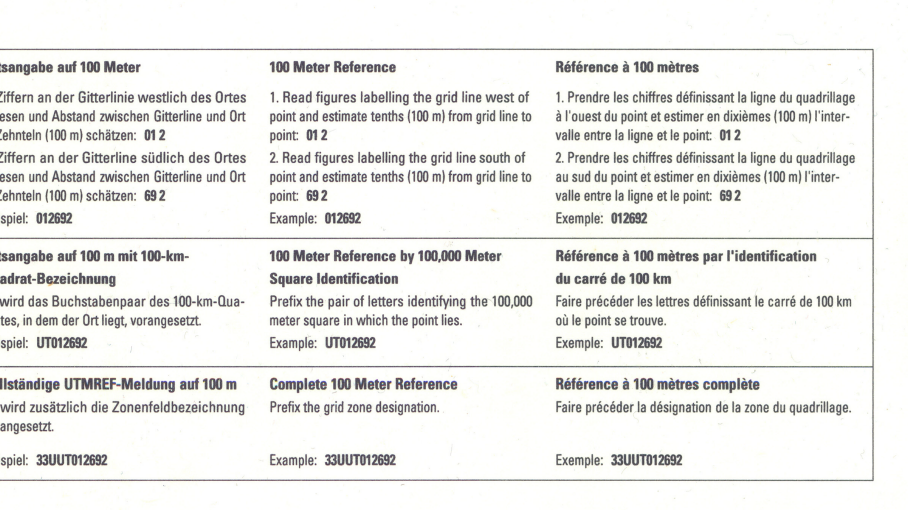
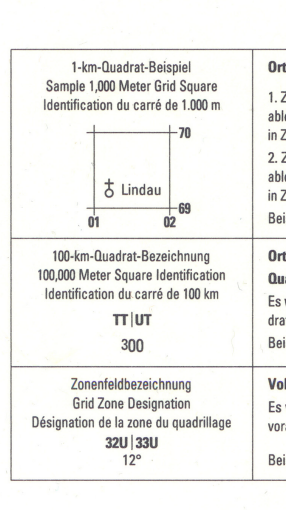
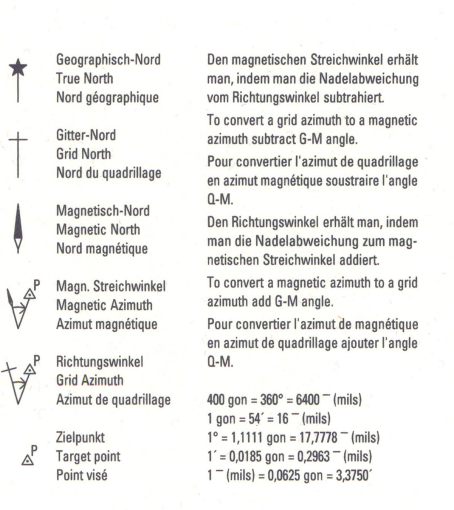
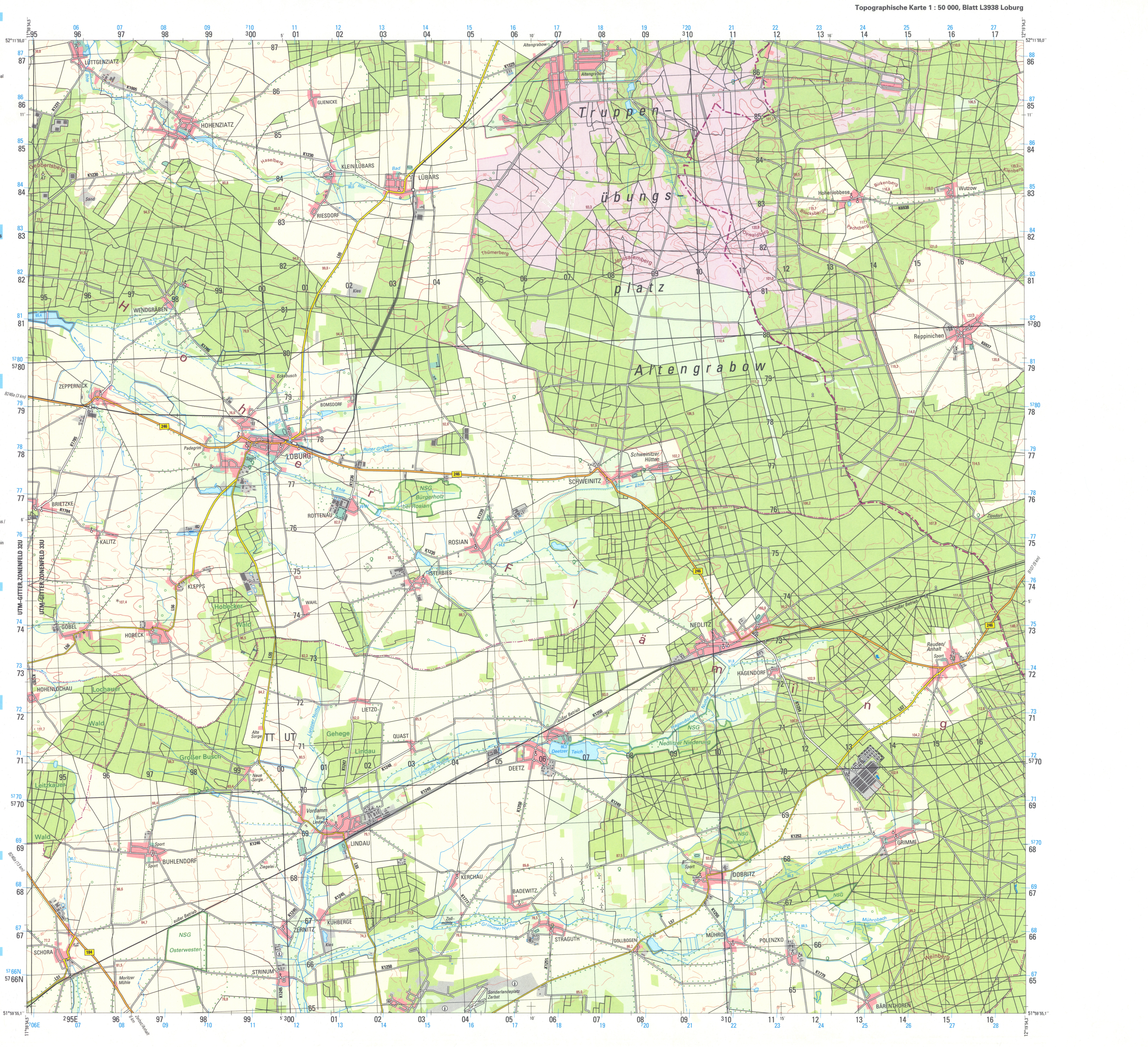


Verwaltungsgliederung: Bundesrepublik Deutschland, Land Sachsen-Anhalt, Land Jerchow, Land Bitterfeld-Lutherstadt, Land Wittenberg, Land Potsdam-Mittelmark.

Herabgeber: Landesamt für Vermessung und Geoinformation Sachsen-Anhalt (LVRGeo). Contact information and website details.

Product information including ISBN 978-3-89761-136-8, barcode, and technical specifications for the map series.

Main legend table with columns for German, English, and French descriptions of symbols for settlements, supply, disposal, lines of communication, vegetation, hydrography, relief, and boundaries.



Blattübersicht - Adjoining sheets - Tableau d'assemblage: Grid reference table for the 1:50,000 map, showing coordinates for various grid squares across the region.